

# Diabetes and DR Disease Management

“Turn-Key-Solutions” provided by the experts

# Table of contents

1 Overview

2 The Services

3 The Products

4 The Features

5 Attachments

# Turn Key Solutions for Disease Management

Inoveon and ifa: the Experts for Health IT in Eye Care worldwide

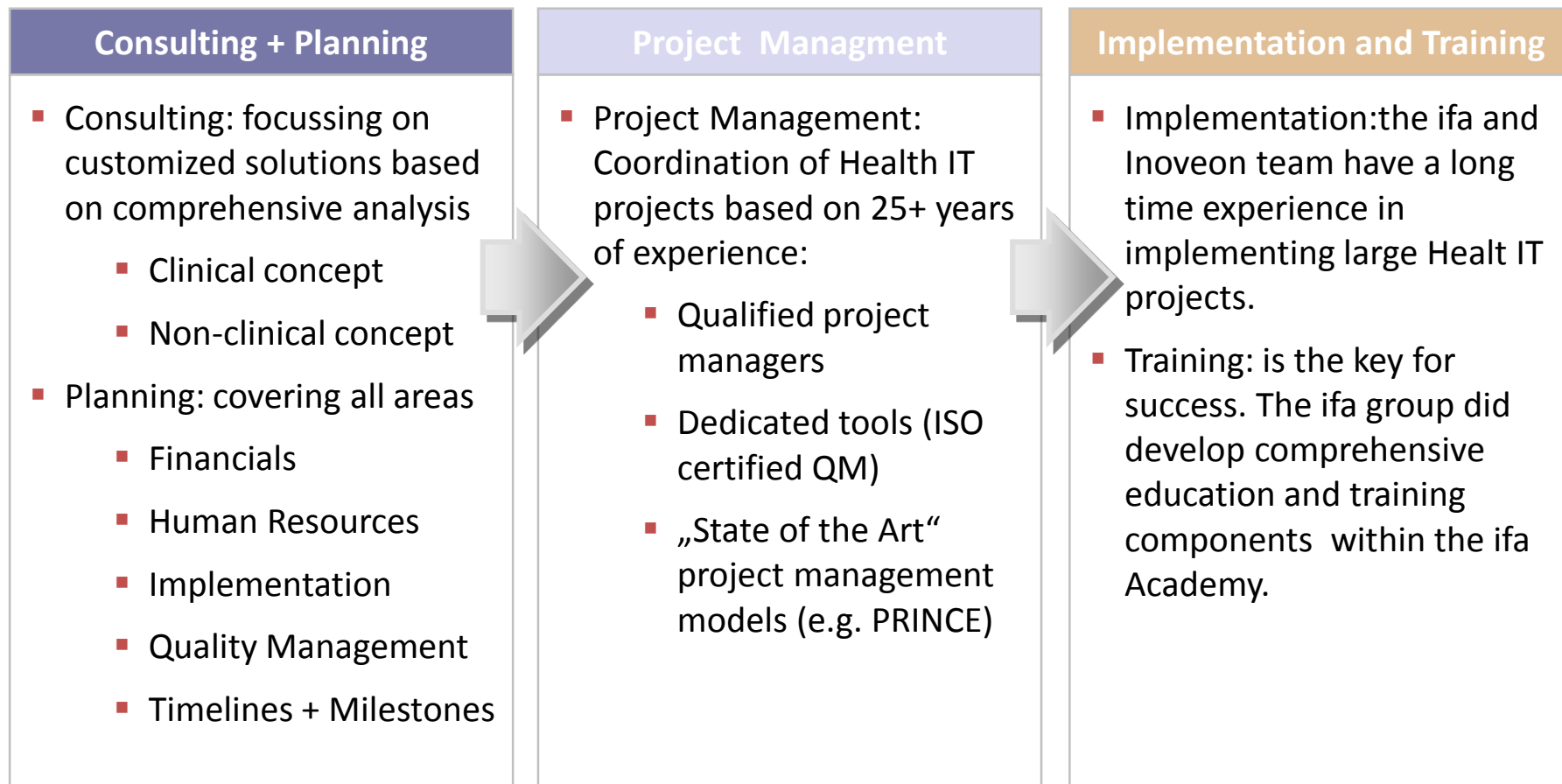


## DR/ME Management Projects

- The ifa group of companies with the subsidiaries Inoveon Corp. and Integration AG are specialized in Health IT projects such as computer based Disease Management for DR/ME.
- The ifa group delivers dedicated products (e.g. software applications and devices) and corresponding services (e.g. consulting, planning, project management, training and implementation).

# The Services

The services are performed by over 100 Health IT specialists



# The Products

All software products follow international quality standards

## Reading Software+QM SW

- The INOVEON Reading SW is based on a 14 years experience and is used within US Government projects since 1998.
- The software developed for reading stereo images is based on „State of the Art“ technology and is designed for structured and fast work flows.
- The QM Software is ISO 9000 certified and provides SOPs for all processes.

## Electronic Medical Records

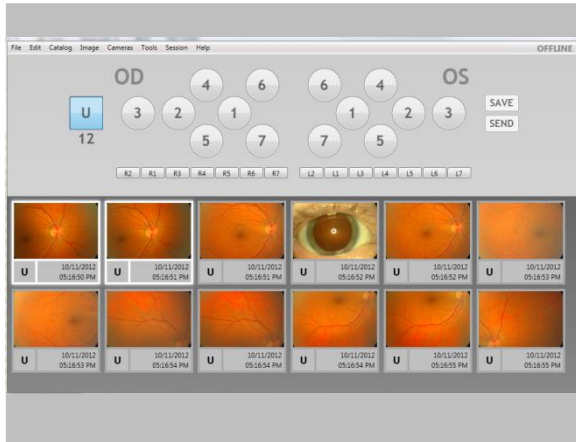
- The Electronic Medical Record (EMR) is used by more than 12.000 clinical and non-clinical professionals every day in more than 20 countries
- The EMR allows to connect more than 450 different devices and cameras and is ready for comprehensive clinical decision support processes.

## Registry+Co-Management SW

- The Registry System is web based and designed for international quality outcome and disease management. The same platform is used for the largest IT project in eye care (EUREQUO)
- The web based Co-Management SW supports the disease management performed by multiple specialists (Diabetes and DR/ME)

# The dedicated Software Systems

The compatible SW systems cover the entire work flows



- The reading software is the backbone of the system.
- The software architecture is based on a US patent .
- The 7 fields images taken from risk patients are validated by non-physician readers supported by the software.



- The ifa PREMIUM EMR (Electronic Medical Record) is the world leading system for eye care professionals worldwide.
- The EMR SW offers all features for documentation and communication with all relevant devices and cameras.



- The registry system is approved within several international projects.
- The largest Health IT project in eye care, EUREQUO, is based on the ifa technology.

# The 4 Steps to Success

